



Island studies? islands as models



- Marginality: self-reliance & sufficiency
- Vulnerability: fragmented habitats, societies, cultures, languages
- Resilience: connectedness, creativity, sharing

Island potential



- Islands can be a breeding ground for creativity, a test site for new approaches



Island necessities



- Being somewhat isolated, Islanders must strive for self sufficiency and cooperation
- It is equally important to forge links with the larger world, develop partnerships

Island opportunities

- A small island population offers a special opportunity for raising public awareness...



...and stimulating collective action



Change and resilience



- The certainty of change - at an increasing pace
- Remote islands at the nexus of tradition and modernity
- PEI also struggles with many transitions

Marginality has its benefits

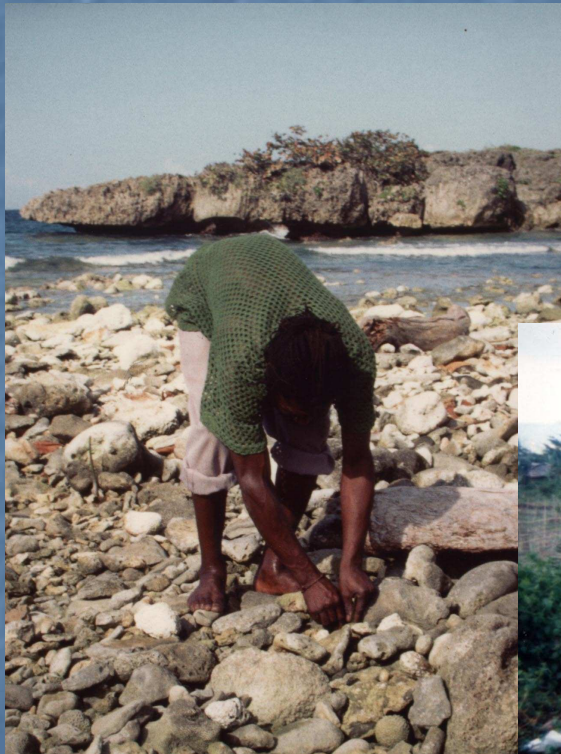


Being left behind can leave you further ahead in terms of

- Natural capital
- Social capital
- Cultural strength



Challenges: Maintaining natural capital



Conserving & enhancing social capital



Finding appropriate models of economic development

- scale
- marginality
- entrepreneurship
- gender roles
- youth



Negotiating island identities



Islandness PEI style...



Our Island “way of life” places value on stewardship, culture, sharing

BUT

global economic forces, changing demographics etc are threats to sustainability

IIS Focus

Culture, economy & environment of PEI
and other small islands



IIS Goal

To improve quality of life on PEI through practical application of the discipline of Island Studies



Mandate



- understanding & expression of PEI
- bridge UPEI & wider community
- contribute to progressive public policy
- comparative island research



Evolution of Island Studies at UPEI

- Initial focus – PEI economy & culture
- then - intersections with environment
- then - global comparative studies
- 2003 - focus on marine affairs
- Island Studies Press – part of IIS
- Undergrad Minor in IS & Master of Arts in Island Studies – separate from IIS
- Canada Research Chair in Island Studies

Institutional operations: Admin

- office & staff manag't
- policies
- advisory council
- fundraising
- reporting
- communications

Programming

- Public forums
- Policy interventions
- Guest lectures
- Research
- Events



Partnerships

- Collaborative research
- Collab events & projects
- Community support
- Co-teaching
- Participation in other orgs



IIS activities 2006-07

(understanding, bridging, policy, research)

- Community capacity building
(fundraising, collaborative activities & research)
- Local / regional / global networking

Public forums

- Cruise ship Tourism (IIS forum)
- Museums & Heritage (public consultation)
- Dreamers' symposium (island futures / collab with PEI EcoNet)
- Water Quality & Health (collaboration with Biology, Ryerson U)

Guest Lectures

- island cultures
- environmental issues
- literature
- Mi'kmaq history
- PEI forests
- public transit
-
- mining in Indonesia
- PNG politics
- island whaling
- social economy
- Aboriginal cultural survival

Other Policy interventions

- Government Policy & the Social Economy
- Northumberland Strait fishery negotiations
- Cosmetic pesticides presentation
- Fisheries summit



Research & Publishing (Director, Research Associates, Students)

- Chinese Islanders book publication
- gender & fisheries (initiated)
- fisheries management (Novaczek x 3)
- microenterprise (Stuart & Novaczek)
- forestry (D. Sobey research)
- Sustainability (Nagarajan)

Social Economy Research Network (2005-2010)

- Gender equity; gender & fisheries
- Labour law & policy
- Domestic violence
- Sustainable agriculture
- SE supports
- Learning disabilities
- Quality of life
- Watershed management
- Immigrant supports
- Youth in community
- Indigenous knowledge for health and microenterprise
- Rural community development











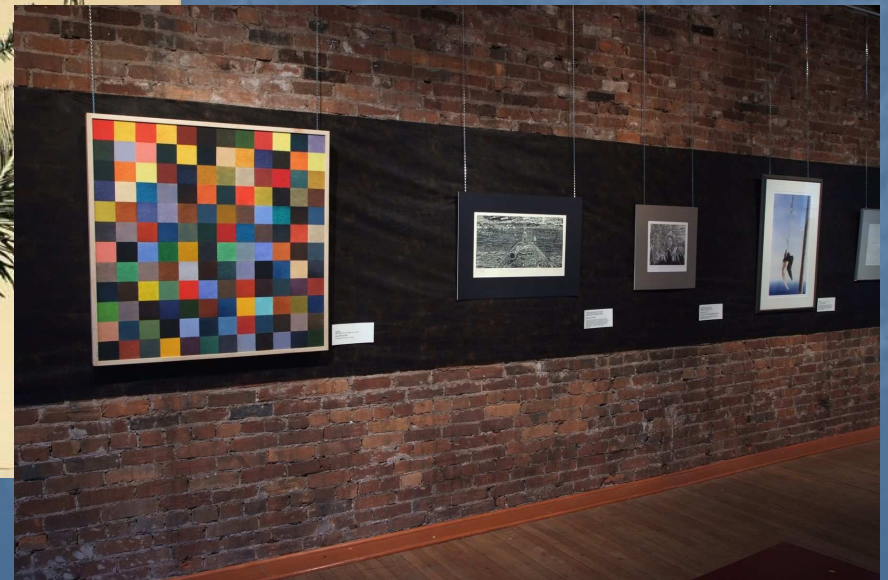
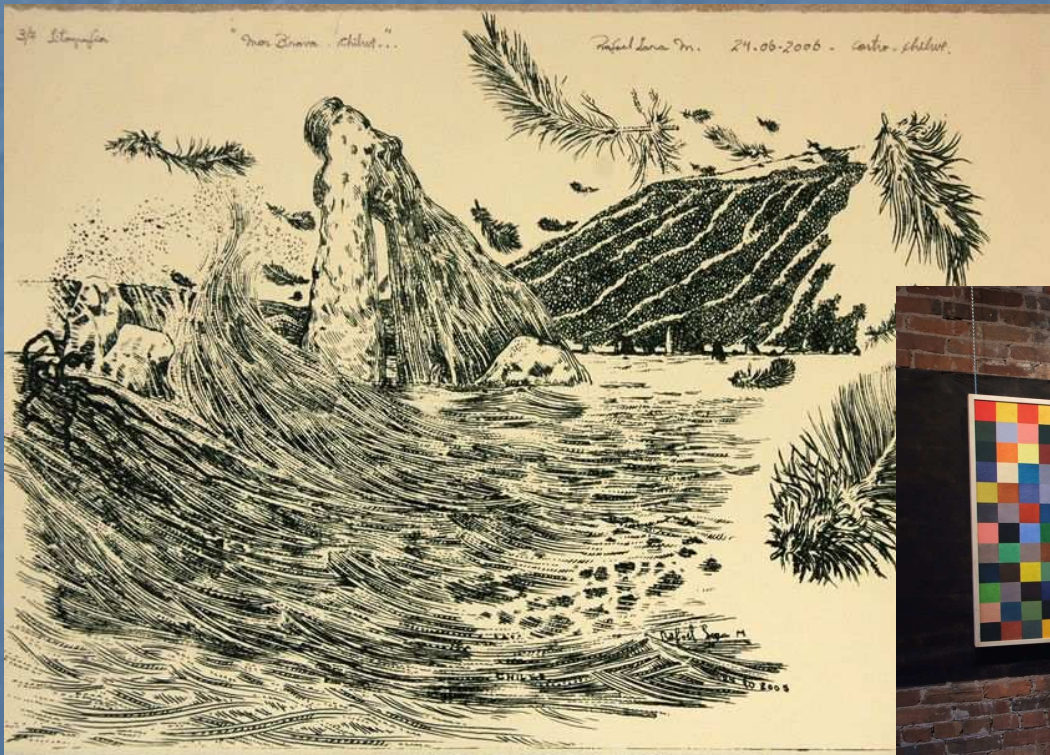








SICRI art show



SICRI conference





Constraints

- limited core funding
- Little provincial \$\$ support
- no admin support
- soft money staffing
- limited space
- MAIS students & staff, CRC share space & office resources

Opportunities & strengths

Advisory Council – untapped potential



Strong & diverse community partners



UPEI partners including CRC & MAIS; Support of Dean of Arts; New Dean of Science sympathetic



Profile

- Almost monthly “hits” in local media
- Frequent requests for collaboration, assistance
- Some regional and national media exposure
- International exposure at conferences



Social Economy Network

- Funds to use to leverage other funding
 - Collaborative research opportunities
 - Vibrant partnerships
- focused on important public policy issues



Global connections

- **ISISA**
- **NAIP (2007 conference)**
- **SICRI (2007 conference)**
- **GIN**



- **USP**
- **Chiloe project**

Finances

- Core budget for Director & office supplies (\$3k discretionary)
- UPEI misc support ~ \$5k/yr
- Projects : (SERN, DFO contract, CIDA interns)
- Project funds may flow through partner orgs
- ISP sales
- Support from Deans and President

New proposals submitted

- Aboriginal youth in fisheries management (Collab with ARCIS U, Chiloe & PEI orgs)
- PEI watershed monitoring (collab with Biology)
- Youth Mental Health (collab with Dal & MUN)
- Food security (collab with Wilfred Laurier Univ)

Planned projects 2008

- Connie MacFarlane museum display/activities (Diane Barnes)
- Museum & Heritage consultations
- PEI Water quality consultation
- Social Economy supports follow up
- SERN continuing...

And the last word goes to...



To be born on an
island's to be sure

You are a native
with a habitat

Growing up on one's
good training

For living in a
country, on a
planet.

(I Milton Acorn)